



TRAPPER and STEPPER milking parlour flooring



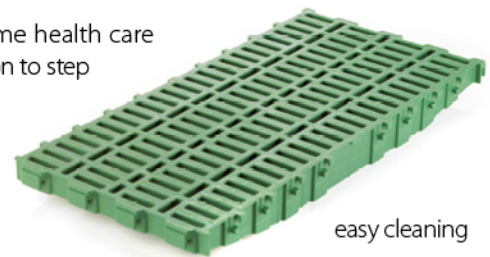
The temperature neutral panels TRAPPER and STEPPER ensure a safe and ergonomically designed workplace.

- easy cleaning and effective drainage
- anti-skid surface
- slightly elastic, it is gentle to back and joints
- underfloor ventilation with warm air is also possible



TRAPPER

TRAPPER offers milkers welcome health care during the working day in addition to step safety and easy cleaning.

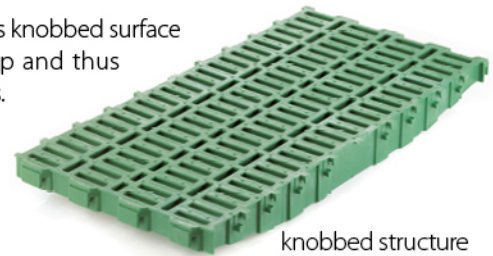


easy cleaning



STEPPER

STEPPER'S special design with its knobbed surface structure guarantees more grip and thus provides safer working conditions.



knobbed structure for perfect grip

Both grids are in blue, opal green, green, gray, white available.



Technical data

	Trapper	Stepper
Measurements mm	800x400	
Slit width	14 mm	
Animal weight	200 kg	



Accessories

DUO

The DUO support beam system is the basis for the entire panel system. The beams made of composite fiberglass (GRP) ensure a stable and durable panel support. Even under difficult construction conditions, our wide accessory assortment guarantees easy and fast assembling.

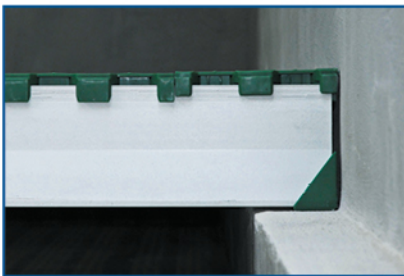
Benefits

- high bearing load and stability due to delta-profile
- special DUO edge profile for additional interlocking with panel
- support leg system for wider spanning
- acid and alkali resistant
- first class self cleaning
- no corrosion

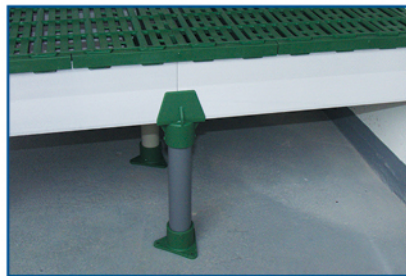


DUO supporting leg set

PVC piping (green) up to 50 cm
GRP piping up to 100 cm



DUO with Protect on concrete lintel



DUO on support legs



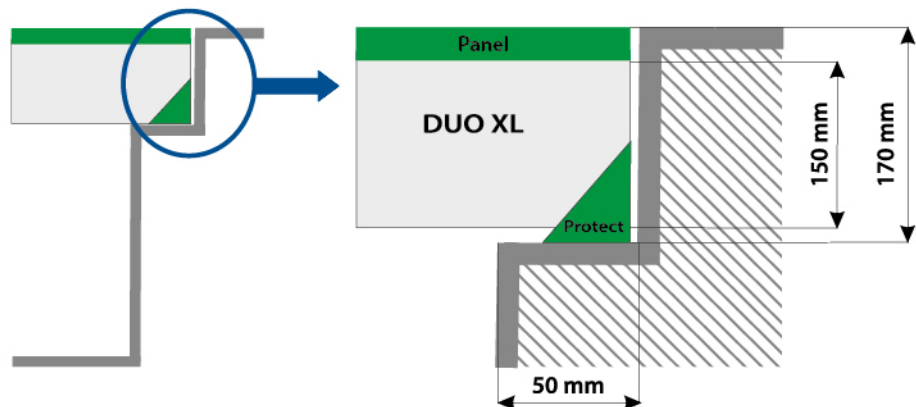
Stainless steel wall clamp

hygienic assembling solution

Installation example

Installation height

Panel = 15 mm
DUO XL = 150 mm
Protect = 5 mm
Total = 170 mm



Your MIK dealer:

MIK INTERNATIONAL GmbH & Co. KG

Distribution center:

Masselbachstr. 22 · 56235 Ransbach-Baumbach

Fon +49 2922 885 600 · Fax +49 2922 885 670

MIK[®]
INTERNATIONAL

info@mik-online.de • www.mik-online.com