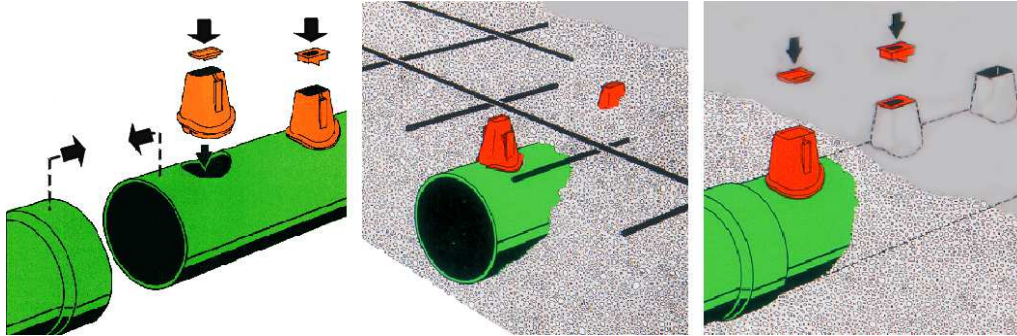


## GRÜNE RINNE INSTALLATION INSTRUCTIONS

Accessories for one pipe  
included:

= 2 meters  
13 orange spouts with separate lids  
13 inlet feeders 45°



1. Insert spouts and close them with the lids.
2. Embed the GRÜNE RINNE in a layer of mortar. Adjust the upper edge of the spouts to the height of the concrete. The concrete has to end 55 mm above the upper edge of the pipe.
3. Slope: a maximum of 5 mm to 10 mm for a distance of 10 m (0,05 – 0,1% ) is allowed.
4. We recommend installing inspection chambers at the beginning of the GRÜNE RINNE, each 20 meters and at the end of the pipe. Then cover with a steel plate.
5. Thorough rinsing is much easier to handle if a water feeding pipe is installed at the beginning of the GRÜNE RINNE.
6. **Attention:** Fixing with moist concrete prevents a going-up of the GRÜNE RINNE when using concrete of liquid consistency.
7. Reinforcement with structural steel lathing guarantees a perfectly safe functioning, prevents a possible cracking of the concrete, thus breaking of the GRÜNE RINNE and seeping of liquid manure.
8. After complete setting of the concrete or cast plaster floor, push the hinged lid into the pipe.

Insert inlet feeders into the spouts. **Alternative:**  
Place a flat bar sized 20 x 5 longitudinally over the spouts and remove at the end bears.

Advantages:

- \* The cast plaster floor can easily be stripped off
- \* The spout do not jut out of the cast plaster floor
- \* The existing channel serves as collecting pipe
- \* Piglets cannot remove the inlet feeders of the spouts

